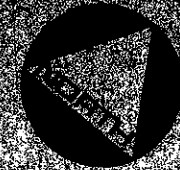


MD-142

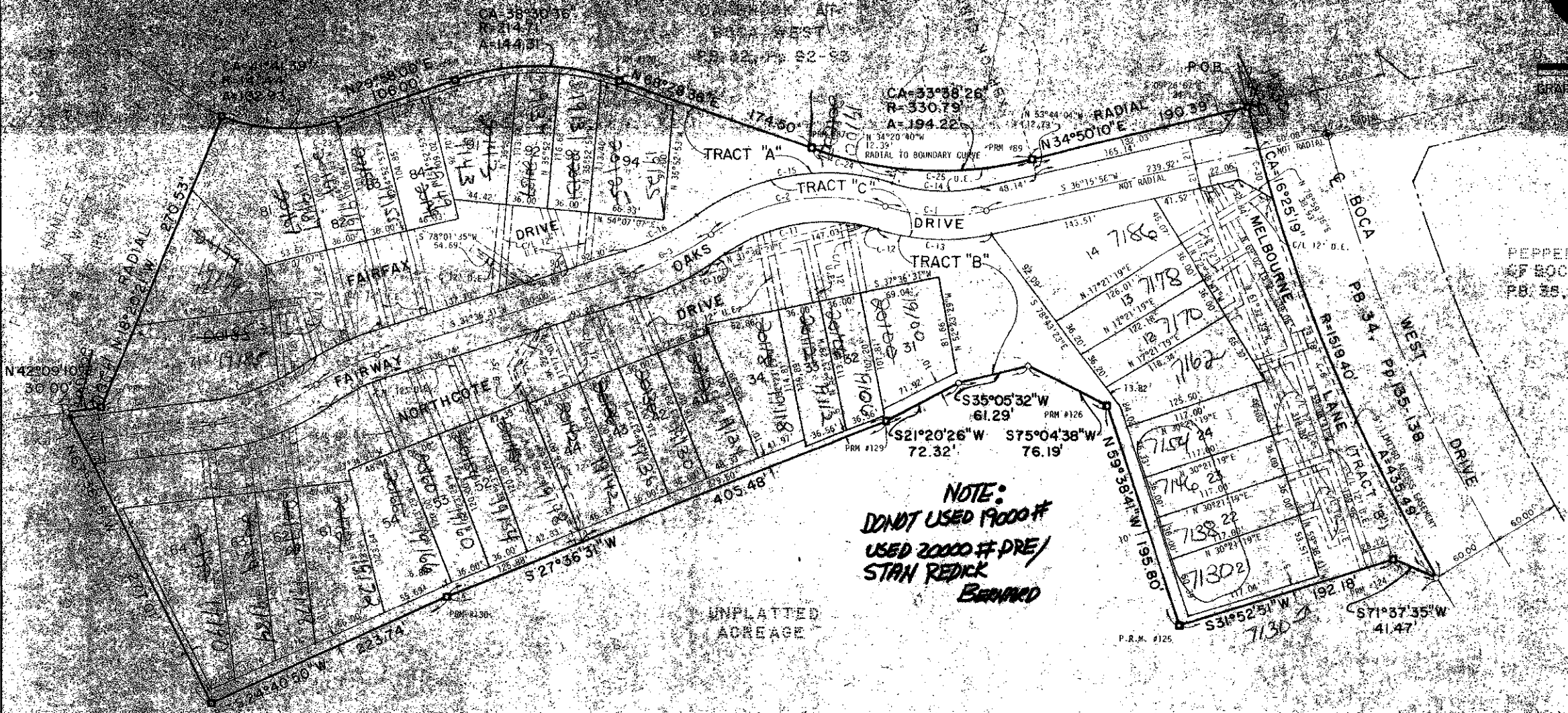
FAIRWAY OAKS AT BOCA WEST

IN PART OF SECTION 9, TOWNSHIP 47 SOUTH, RANGE 42 EAST, PALM BEACH COUNTY, FLORIDA

142



GRAPHIC SCALE
1" = 50' ± 10%



NOTE:
DO NOT USE 19000 #
USED 20000 # PRE/
STAN REDICK
BENCH MARK

UNPLATTED
ACREAGE

CURVE DATA

LINE NO.	BEARING	ANGLE	RADIUS	ARC
1	N 70° 16' 31"	170.00	88.41	170.00
2	S 70° 16' 31"	170.00	88.41	170.00
3	N 70° 16' 31"	170.00	88.41	170.00
4	S 70° 16' 31"	170.00	88.41	170.00
5	N 70° 16' 31"	170.00	88.41	170.00
6	S 70° 16' 31"	170.00	88.41	170.00
7	N 70° 16' 31"	170.00	88.41	170.00
8	S 70° 16' 31"	170.00	88.41	170.00
9	N 70° 16' 31"	170.00	88.41	170.00
10	S 70° 16' 31"	170.00	88.41	170.00
11	N 70° 16' 31"	170.00	88.41	170.00
12	S 70° 16' 31"	170.00	88.41	170.00
13	N 70° 16' 31"	170.00	88.41	170.00
14	S 70° 16' 31"	170.00	88.41	170.00
15	N 70° 16' 31"	170.00	88.41	170.00
16	S 70° 16' 31"	170.00	88.41	170.00
17	N 70° 16' 31"	170.00	88.41	170.00
18	S 70° 16' 31"	170.00	88.41	170.00
19	N 70° 16' 31"	170.00	88.41	170.00
20	S 70° 16' 31"	170.00	88.41	170.00
21	N 70° 16' 31"	170.00	88.41	170.00
22	S 70° 16' 31"	170.00	88.41	170.00
23	N 70° 16' 31"	170.00	88.41	170.00
24	S 70° 16' 31"	170.00	88.41	170.00
25	N 70° 16' 31"	170.00	88.41	170.00
26	S 70° 16' 31"	170.00	88.41	170.00
27	N 70° 16' 31"	170.00	88.41	170.00
28	S 70° 16' 31"	170.00	88.41	170.00
29	N 70° 16' 31"	170.00	88.41	170.00
30	S 70° 16' 31"	170.00	88.41	170.00

NOTES:

1. ■ DENOTES A PERMANENT REFERENCE MONUMENT, FLA. CERTIFICATE NO. 2824
2. ● DENOTES A PERMANENT CONTROL POINT, FLA. CERTIFICATE NO. 2824
3. U.E. DENOTES A UTILITY EASEMENT
4. THIS INSTRUMENT WAS PREPARED BY ROBERT G. WHIDDEN IN THE OFFICES OF BENCH MARK LAND SURVEYING AND MAPPING, INC., 2933 EXCHANGE COURT, WEST PALM BEACH, FLORIDA 33409
5. ALL UTILITY EASEMENTS EXTENDING FORWARD (TOWARD THE SHEETS) FROM ONE LOT TO ANOTHER HEREON ARE AS PROLONGATION OR TWO DEGREE PROJECTION OF THE LOT LINE APPURTENANT THEREOF UNLESS OTHERWISE INDICATED.

0214-301

FAIRWAY OAKS AT BOCA WEST

40/142



ROBERT G. WHIDDEN, CONSULTING ENGINEER, INC.
WEST PALM BEACH, FLORIDA